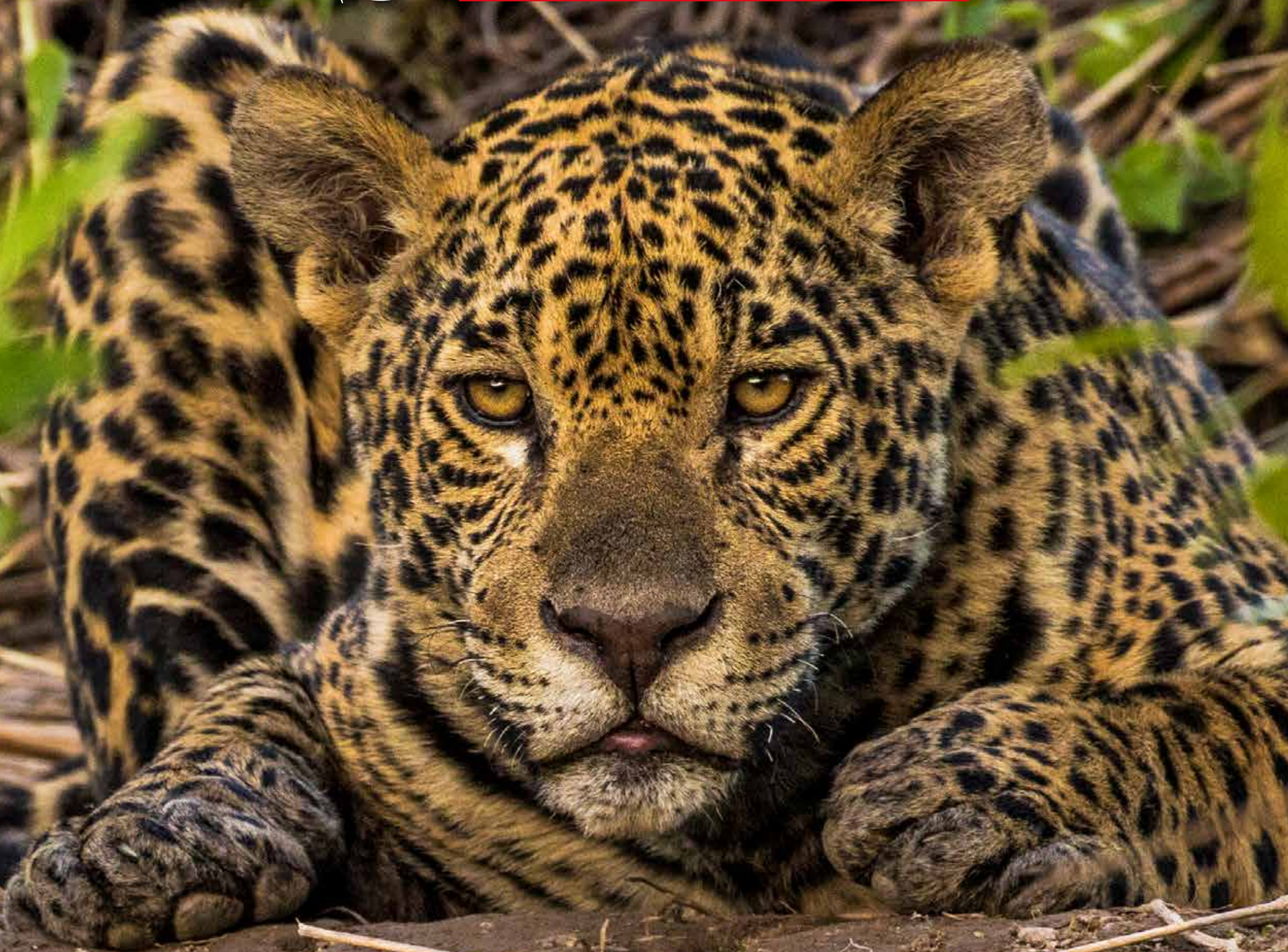




NEOTROPICAL

NATURE & BIRDING TRIPS



BRAZIL'S PANTANAL

ITINERARY



Spanning this colossal floodplain landscape are a myriad of habitats, a testament to the Pantanal's ecological diversity. Ponds and lakes mirror the endless sky, reflecting the rich tapestry of aquatic vegetation that carpets their surfaces. In the embrace of swampy forests and across vast grasslands and savannas, life flourishes in its myriad forms. The gallery forests and riparian woodlands, tracing the course of waterways, add to the visual splendor of this natural masterpiece.

12 Day / 11 Nights Wildlife & Birding Safari. The arrival and departure Airport is Guarulhos International (GRU).

Itinerary summary

We invite you to accompany us deep into this renowned wildlife haven, a realm that promises an adventure of unparalleled significance. Nestled within this remarkable setting, charming and inviting lodges find their home within cattle ranches that have transitioned seamlessly into conservation tourism. These lodges have thoughtfully adapted their infrastructure to provide accommodations that blend comfort with immersion in nature's embrace. Each lodge boasts its own exceptional and distinct wildlife community, creating an intimate connection with the surroundings.

Day 1 (July 21st): Arrival to São Paulo, Brazil


Arrive in São Paulo, Brazil, at Guarulhos International Airport (GRU). No activities are planned for this day so you can rest from your travels. The transfer to your hotel is included; your hotel is about ten minutes away and we can organize an early check-in as an option for those that need it. Usually rooms become available by 2 pm; getting into a room earlier than that requires additional charges.

This evening you'll enjoy a welcome dinner and the chance to meet your guide and travel companions, and learn more about our coming adventure.

Accommodations in Guarulhos Hampton Hotel (-/-/D)



Brazil's Pantanal stands as the world's most expansive tropical freshwater wetland, encompassing a remarkable expanse of the Earth's surface. Constituting approximately 3% of the globe's total wetland area, this natural wonder captivates with its unique floodplain ecosystems, typified by their rhythmic dance of seasonal floods and subsequent droughts. Our tailored tours of this captivating destination are timed to coincide with the dry season, when the water levels recede to unveil a captivating spectacle: ponds and mudholes teeming with an abundance of trapped fish, an irresistible banquet that beckons a congregation of ravenous predators.

A Giant Anteater (Myrmecophaga tridactyla) is shown in profile, facing right. It has a long, dark, pointed snout and a body covered in thick, coarse, greyish-brown fur. The animal is standing in a field of green grass and low-lying plants. The background is filled with dense, out-of-focus green foliage, suggesting a natural habitat like the Pantanal wetlands.

This part of Mato Grosso do Sul is considered the best place in the continent to admire the Giant Anteater (*Myrmecophaga tridactyla*), is the largest species of anteater and the only species in the genus *Myrmecophaga*.

DAY 2 (July 22nd) : Aguapé

Early Flight to Campo Grande Airport (CGR) | Explore the South side of the Pantanal at Mato Grosso do Sul.

Today you'll take a morning flight to Campo Grande (1h50 min). From there you'll drive to Aguapé Lodge (around three and a half hours drivetime to cover 195 km approximately). By the beginning of the dirtroad you'll make stops looking for mammals and birds.

Stunning birds that might show up in the way are Hyacinth Macaw, Nanday Parakeet, Toco Toucan, White Woodpeckers, Narrow-Billed Woodcreeper, Purplish and Plush-crested Jays, Red-crested Cardinal, Campo Flicker, Red-legged Sereima and many others.

As the day's adventures unfold, you'll reconvene with fellow explorers and friends to enjoy a delightful dinner. A time of camaraderie and celebration, this evening provides the perfect opportunity to commemorate the incredible wildlife encounters that have already marked the beginning of your journey into the Pantanal.

Your remarkable expedition has just begun, promising days filled with the wonders of nature and the thrill of discovery.

Accommodations at Aguapé Lodge (B/L/D)



MATO GROSSO DO SUL



Southern Tamandua

DAY 3 (July 23rd): Aguapé

Aguapé offers an excellent environment for birdwatching and wildlife photography; a place where over 380 bird species have been recorded. Among the illustrious residents that might grace your lens are the regal Bare-faced Curassow, the vibrant Blaze-winged Parakeet, and Gilded Hummingbird. The iconic Toco Toucan, along with the Pale-crested and White-fronted Woodpecker, create a visual feast for photographers and bird enthusiasts alike. Keep your camera ready for the distinctive Red-billed Scythebill, Campo Flickers, and the striking Scarlet-headed Blackbird.

Start your days with the promise of adventure as you partake in an exhilarating safari drive, over these days. With the golden light of dawn painting the landscape, your chances of encountering some of the Pantanal's most iconic residents are at their peak. Witness the elegant strides of the Giant Anteater and Southern Tamanduas as they traverse the terrain. The elusive Crab-eating Fox and the Six-banded Armadillo might reveal themselves just around the lodge.

As you explore the landscape, your eyes and lenses will capture a diverse cast of characters. Capped Herons grace the water's edge, while the magnificent Jabiru takes to the sky in all its glory. Other common species of this area are the Savanna Hawk, Rufescent Tiger Heron, Buff-necked and Plumbeous Ibis, the elegant Roseate Spoonbill offers a burst of color. The skies come alive with the brilliance of the Hyacinth and Yellow-collared Macaw, while the striking Orange-backed Troupial adds its unique voice to nature's chorus.

Accommodations at Aguapé Lodge (B/L/D)



DAY 4 & 5 (July 24th - 25th): Buraco das Araras - Bonito

As the sun rises over Aguapé Lodge, you'll fuel up with an early breakfast, preparing for a day that promises both geological wonders and avian spectacles. Your path leads to Buraco das Araras, a monumental sandstone crater etched into the heart of the Cerrado. This geological masterpiece was sculpted by the collapse of boulders, crafting a vast expanse that spans 500 meters in circumference and plummets to a depth of 100 meters. The place earned its name due to the captivating presence of the Red-and-Green Macaws, whose vivid hues add splashes of brilliance to the landscape. This natural sanctuary provides a front-row seat to their nesting and roosting sites, granting you an unparalleled opportunity to capture these colorful creatures up close.

With your camera in hand, you'll capture the intricate details of these magnificent birds, their every feather and expression preserved in your photographs. The geological contours of the crater create a unique backdrop, enhancing the visual narrative of your shots.

On July 25th, hearts brimming with wonder and memory cards laden with captivating images will propel you forward. Following a morning of engaging activities and an early lunch, your journey will lead you to Campo Grande. As the sun rises on the next day, you'll take a flight to Cuiabá, marking the commencement of the second chapter in your remarkable adventure.

**Accommodations in Bonito July 24th and Campo Grande July 25th
(B/L/D)**



BURACO DAS ARARAS

RED-AND-GREEN MACAW PARADISE

Day 6&7 (July 26th-27th): Early flight from Campo Grande to Cuiaba | Northern Transpantaneira Aymara Lodge

Today early in the morning you'll embark on a domestic flight to Cuiabá, setting the stage for your adventure into the untamed Pantanal. Today's destination is Aymara Lodge, a pousada that marks the threshold to the northern reaches of the Pantanal in Mato Grosso. Nestled just few km away from the charming town of Poconé, standing as one of the first lodges at the renowned Transpantaneira road. With its cozy and inviting atmosphere, Aymara seamlessly blends into a 238 hectares family-run reserve that envelops it. Nestled amid a lush tapestry of native forest, Aymara Lodge emerges as a sanctuary on the banks of a serene "corixo," a tranquil waterway gently embraced by the land. This refuge stands as a gateway to the wonders of wildlife, offering an immersive experience unlike any other. Upon arrival and check-in, your journey of exploration commences. A Safari Jeep awaits to whisk you away into the heart of this vibrant ecosystem. In these surroundings, you'll witness a captivating array of creatures that thrive in this unique environment. The emblematic capybaras, the world's largest rodents, make their presence known in abundance, Jacaré caimans lurk in the waterways, Black tailed Marmosets grace the foliage and the echoes of black and gold howler monkeys' calls reverberate through the air.

Sacrllet-headed Blackbird, Southern Screamer, Maguari Stork, Red-legged Sereimas, Jabiru Stork, the elegant Sunbittern, Brazilian Teals, Campo Flickers, the giant Greater Rhea and many other species will reveal their presence in this fascinating place. During your excursion, you'll have the opportunity to explore nearby reserves like Piuval. This enriching experience will grant you access to a sprawling 7,000-hectare family-run ranch and reserve, opening doors to diverse wildlife encounters beyond.

Accommodations at Aymara Lodge (B/L/D)



Day 8 (July 28th): Birding & Wildlife Spotting on the Transpantaneira | Drive to Porto Jofre | Houseboat

Following a rewarding morning activity, you'll embark on a journey down the renowned yet rustic Transpantaneira. This road serves as a vital connection between the city of Poconé and the charming town of Porto Jofre, stretching over a remarkable 147 kilometers and traversing an impressive 122 wooden bridges. Along this route, you'll find abundant chances for captivating wildlife encounters, a phenomenon that becomes particularly pronounced during the dry season. Many animals gather in the remaining and temporary bodies of water and take advantage of the presence of plentiful food sources. With watchful eyes, you'll search for White-headed Marsh Tyrants, Chestnut-bellied Guan, and an incredible mix of wading birds. You'll make several stops along the way at the bridges which are usually very productive, providing new sights at each opportunity. Your route will weave through scattered palm woodlands, cerrado scrub, and seasonally-flooded grasslands. Ponds and canals lining the roadside will come alive with waders like the Roseate Spoonbill, Capped Heron, Plumbeous Ibis, Limpkin, Cormorants, Herons, different species of kingfishers, alongside the iconic Yacaré Caiman numbering in the hundreds.

Upon your arrival to Porto Jofre, the "end of the road," you'll board a small motor boat to reach the houseboat. Boat outings here will feature the world's most diverse assemblage of tame kingfishers (all five South American species are possible), Yacaré Caimans, Capybaras, Brown Capuchin Monkeys, Giant Otters, Agami Herons, Jabiru Storks and ofcourse your main target, the mighty jaguar!

As the day comes to a close, you'll settle into your boat cabins, relishing the comfortable quarters. A celebratory dinner marks the conclusion of another day of remarkable wildlife encounters and adventures.

Accommodations in private cabins on a floating houseboat hotel Panoramico (B/L/D)



Day 9 : (July 29th) Encontro das Águas State Park

Greet the sunrise on the river with a host of sounds and the sight of macaws, parrots and toucans overhead. Today you'll use smaller speedboats to spend the day searching for the iconic Jaguar. During the dry season, docile jaguars known for their affinity to water are photographed along the riverbank searching for the opportunity to ambush their next prey. They are good swimmers, and often lay down along the shore. Chances are good for encountering them!

Indulge in a leisurely onboard lunch, followed by a restorative siesta in your comfortably air-conditioned cabins or on the boat deck, where breathtaking views and soothing sounds abound. As the afternoon sun mellows, our pursuit of Jaguars resumes. Abundant wildlife graces this secluded corner of the Pantanal, and once your primary goal – spotting a majestic Jaguar – is achieved, you'll have the luxury of time to appreciate an array of other captivating species. Look out for the playful Giant Otters, the elegants Black Skimmer and Pied Plover, the resounding call of the Southern Screamer, the enchanting presence of Black and Gold Howler Monkeys, and many more. Your explorations may even lead you to the hidden realms of narrow streams, where elusive creatures like the Pygmy Kingfisher and Sungrebe dwell.

As the late afternoon approaches, you'll make your way back to the hospitable houseboat. Here, amidst a convivial ambiance, you can relish a delectable dinner while you recount and celebrate the day's most memorable highlights!

Accommodations in private cabins on a floating houseboat hotel Panoramico (B/L/D)

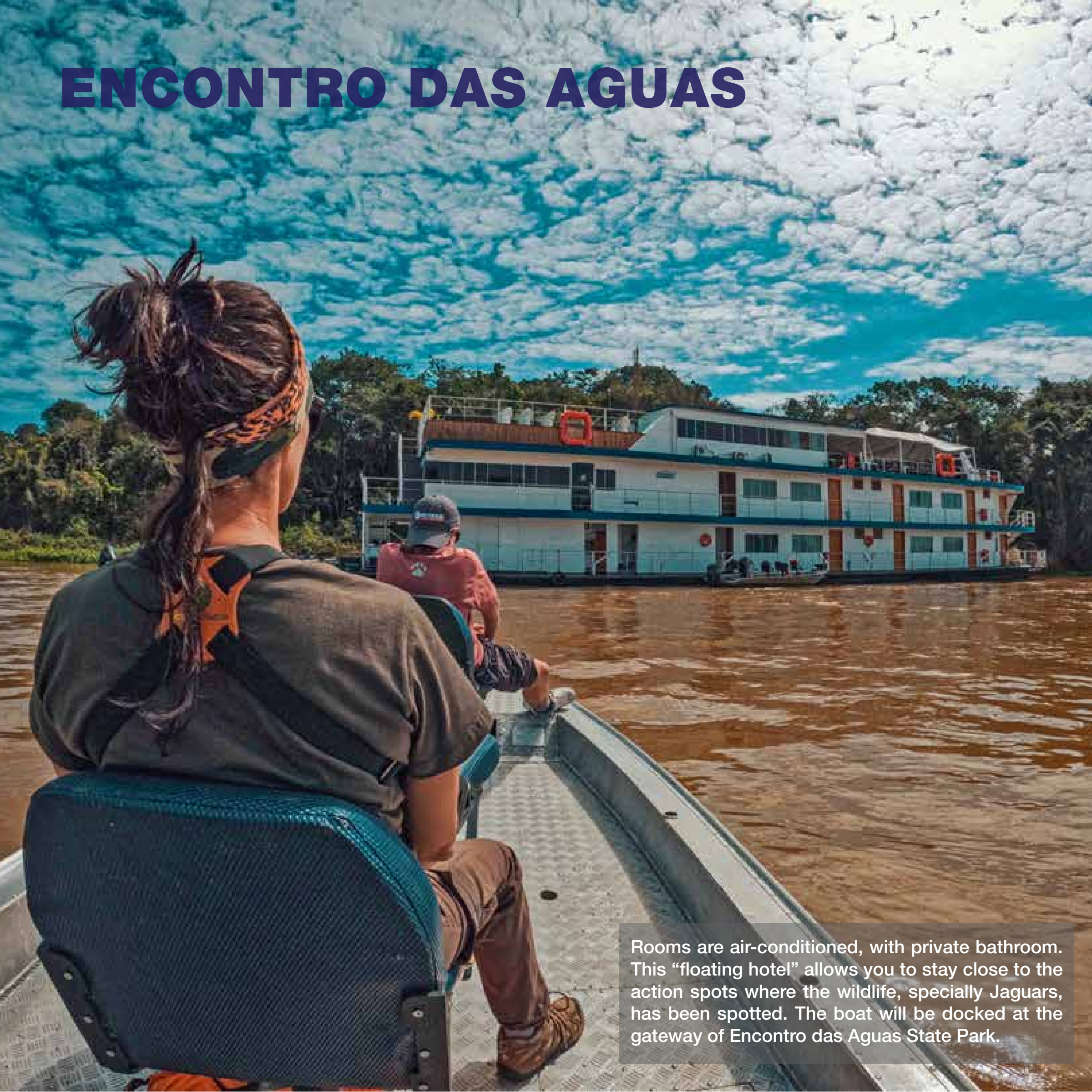


JAGUAR LAND

Relative to its weight, jaguars have the strongest bite force of all big cats. Jaguars' spots are known as rosettes because they have smaller spots inside. Like fingerprints, each jaguar has its own unique set of rosettes that scientists use for identification. It's estimated that over 5000 individuals live in the Pantanal alone, thought to be the largest single population throughout its entire distribution range.



ENCONTRO DAS AGUAS



Rooms are air-conditioned, with private bathroom. This “floating hotel” allows you to stay close to the action spots where the wildlife, specially Jaguars, has been spotted. The boat will be docked at the gateway of Encontro das Aguas State Park.

Day 10 (July 30th) : Santa Tereza Lower Transpantaneira

Having spent two days immersed in the wildest part of the Pantanal and following a productive morning within the Jaguar land, you'll depart this magical place after lunch and make your way back north through the Transpantaneira retracing your route. In the way we can cover some of the areas we previously traveled in more detail. You'll definitely look for more! Chestnut-eared Aracari, Pearled Kite, Rusty-backed Antwren, Common Tody Flycatcher, White-browed Meadowlark, Black-backed Water Tyrant, Great Black Hawks and others species might reveal their presence as you drive to the next lodge. Once you arrive at Fazenda Santa Teresa, you'll settle in and check the activity in the surroundings. This lodge has the world's finest photo op for a close-up, eye-level viewing tower of a Jabiru Stork nest and the remarkable chance of viewing wild Ocelots at close range on natural setting with beautiful vines in good light from a unique observation deck!!

Accommodations at Santa Teresa (B/L/D)





Day 11 (Juy 31st) : Santa Teresa Pixaim River Area Wildlife & Birding

It's another morning to greet the sunrise while sipping good Brazilian coffee. You can have a safari drive or a small boat ride on the Pixaim River this morning, depending on what we still hope to see, to spot secretive species like Agami and Zig-Zag Heron. Two bird observation towers (one near the Jabiru nest, 150 meters from the lodge, and the other in the gallery forest, 900 meters from the lodge) will allow you to enjoy the landscapes and more birds. A wonderful walk through a route in a beautiful gallery forest would also be a fantastic alternative for looking for unusual birds such as Helmeted Manakin, Mato Grosso Antbird, Band-tailed Antbird, Hooded Tanager, Little Woodpecker, Rusty-backed Antwren, Blue-crowned Trogon, Rufous-tailed Jacamar, and others.

Fazenda Santa Teresa accommodation (B/L/D)



Day 12 (August 1st): Wildlife Viewing | Return Drive to Cuiabá - Flight to GRU

After enjoying breakfast, with hearts filled with memories and stories, the journey back to Cuiabá commences. This paved road presents a welcome contrast to the dust-laden trails of the Pantanal, marking a gentle farewell to this captivating landscape.

Your journey is timed for a smooth transition to catch your flight back to Guarulhos. If you want to take the extension trip to search the regal Maned Wolf or to explore the enchanting Chapada dos Guimaraes and Atlantic Forest, enhancing your adventure in this captivating country, simply inform us of your desire.

(B/L/-)

NOTE: If you take the extension trip for the Maned Wolf or Atlantic Forest, this night's accommodation and dinner will be included in Guarulhos.



TRIP CONSIDERATIONS

CLIMATE: This tour takes place during the dry season. Temperatures fluctuate between 60° to 90°F (16° to 32°C), and it is usually very sunny. However, cold fronts are not unusual in the Pantanal this time of year, and the temperature can sometimes drop to around 45°F (7°C) in the early morning. Since part of the time in the Pantanal is spent on fast boats, it is very important to bring cold and windy weather gear for the early morning boat rides. There might be a bit of rain, but it is usually very little, and sometimes none at all.

TIME ZONE: UTC/GMT -3 hours

VISA: The Brazilian Government has cancelled the visa waiver program and will resume the issuance of visitor visas for citizens from Australia, Canada, and the United States of America. The measure will take effect on and after the 1st of October 2023. Until then, the exemption will remain valid, meaning that those entering before 30/09/2023 are still exempt from a Visit Visa, even if they leave after 01/10/2023. Visitors from the UK, EU, South Africa, New Zealand, and various other countries continue to be exempt from tourist visa requirements. Consult your closest consulate to verify the requirements that apply to your particular country.

OVERVIEW:

Max group size: 8 + Tour leader

Length: 12 days

Starting city: São Paulo (GRU)

Ending city: São Paulo (GRU)

Pace: Moderate

Physical difficulty: Moderate

Focus: Natural history, birding and photography

PRICE PER PERSON USD \$6890

Single room supplement USD \$695

Contact us for a quote if you are interested in a private tour

INCLUDED:

- Transfers In-Out
- Private service of a specialized birding & naturalist bilingual guide
- Private transportation
- Private motor canoe for Jaguar spotting
- Accommodation in double or triple occupation. (Single room adds a supplemental fee)
- All meals listed in the itinerary with soft drink or purified water
- All excursions and activities listed in itinerary
- Entrance fees to all the reserves and activities
- All accommodations listed in the itinerary
- All the internal flights:
 - São Paulo (GRU) / Campo Grande (CGR) / Cuiabá (CGB) / São Paulo (GRU)
- Fluvial transportation

NOT INCLUDED:

- International airfare
- Alcoholic Beverages
- Additional drinks
- Tips
- Any other item not specified

CUSTOMIZED & EXTENSION TOURS

Are you looking for a travel experience that is completely customized to your preferences? Allow us to assist you in designing a custom trip that will take you to practically any location you desire. With a personalized tour, you'll have the freedom to travel with a group of your choice, all while setting your own schedule and pace. We may add extensions to other sites such as the Atlantic Forest, Chapada dos Guimaraes, and an exclusive trip to Emas National Park - a once-in-a-lifetime opportunity to see the revered Maned Wolf in its natural habitat. Your specific preferences will be prioritized.



NEOTROPICAL

NATURE & BIRDING TRIPS

MANED WOLF TOUR EXTENSION



Photo by Zdenek Machacek

MANED WOLF EXTENSION

Day 1 (August 2nd) Chapadao do Céu

Following your exiting Pantanal experience and a well deserve rest at your hotel in Cuiabá and after enjoying a hearty breakfast, your day's adventure commences with a transfer from Cuiabá to the captivating Chapadão do Céu. This town serves as the gateway to the Emas National Park and boasts a thriving population of mesmerizing maned wolves. The journey spans a considerable distance, approximately 8 hours of travel time. The Emas National Park is a national park and a UNESCO World Heritage Site in the states of Goiás and Mato Grosso do Sul in Brazil.

This remote destination holds its allure, as access to the park remains solely attainable via this route due to the absence of nearby airports. Along the way, you'll break for meals, ensuring your comfort throughout the journey. Upon arrival, you'll seamlessly transition into your accommodation.

Accommodations in Chapadao do Céu (B/L/D)

Day 2-4 (August 3rd-4rd-5th) Emas National Park

Over the upcoming days, your expedition will encompass the captivating grasslands of the renowned Emas National Park, an odyssey into the heart of its wildlife realm. Guided by the ethos of an African-style safari experience, our mode of traversal through the park – a specialized vehicle – will grant us an elevated perspective, providing prime vantage points to witness the awe-inspiring maned wolves, giant anteaters, white-lipped peccaries, and, in fortunate instances, perhaps even elusive pumas.

A highlight of this adventure might be the unparalleled opportunity to encounter maned wolves, observed here more frequently than anywhere else on the planet in 100% natural conditions. Rest assured, our journey is steered by the expertise of a local guide who boasts an intimate understanding of the park's nuances. We aim for sightings of not just maned wolves, but also the charismatic Brazilian tapirs and the endemic and recently rediscovered tanager: the Cone-billed tanager that grace this reserve. Keep in mind that the observation of Maned Wolves in the wild is not guaranteed.

Dedicating as much time as you desire within the park during daylight hours, we come prepared with packed lunches, affording the luxury to extend our stay and heighten the prospect of maned wolf sightings. These enigmatic creatures traverse the grasslands in pursuit of fruit-bearing plants and termite mounds.

At the culmination of each exhilarating day within the park, we retreat to the comforts of our accommodation, nestled in Chapadão do Céu.

Accommodations in Chapadao do Céu (B/L/D)

Day 5 (August 6th) Transfer to Cuiabá

Today you'll be transfer to the Marechal Rondon International Airport (CGB) in Cuiabá . We'll arrive to Cuiabá in time for our flight back to Guarulhos (GRU)

(B/L)

TRIP CONSIDERATIONS

CLIMATE: This tour takes place during the dry season. The Cerrado is typically hot and semi-humid with rainy summers and dry winters. June through August is the best time for wildlife viewing.

Temperature ranges between 76.6F (13.8C) – 47.1F (8.4C) and it is usually very sunny. Emas has a tropical savanna climate. It is warm every month with both a wet and dry season. The average annual temperature for Emas is 61° degrees and there is about 191 inches of rain in a year. It is dry for 185 days a year with an average humidity of 61% and an UV-index of 7.

VISA: The Brazilian Government has cancelled the visa waiver program and will resume the issuance of visitor visas for citizens from Australia, Canada, and the United States of America. The measure will take effect on and after the 1st of October 2023. Until then, the exemption will remain valid, meaning that those entering before 30/09/2023 are still exempt from a Visit Visa, even if they leave after 01/10/2023. Visitors from the UK, EU, South Africa, New Zealand, and various other countries continue to be exempt from tourist visa requirements. Consult your closest consulate to verify the requirements that apply to your particular country.

OVERVIEW:

Max group size: 6 + Tour leader

Length: 5 days

Starting city: Cuiabá (CGB)

Ending city: São Paulo (GRU)

Pace: Moderate

Physical difficulty: Moderate

Focus: Natural history, birding and photography

PRICE PER PERSON USD \$2980 in double occupation room

INCLUDED:

- Private service bilingual guide
- Private transportation
- Accommodation in double or triple occupation. (Single room adds a fee)
- Accommodation in Cuiabá for the night that you finish your Pantanal tour
- All meals listed in the itinerary with soft drink or purified water
- All excursions and activities listed in itinerary
- Entrance fees to all the reserves and activities
- Flight back to Sao Paulo - Guarulhos (GRU)

NOT INCLUDED:

- International airfare
- Alcoholic Beverages
- Additional drinks
- Tips
- Any other item not specified

***Private tours can be arranged. Contact us for more information**

PLEASE ASK FOR FURTHER INFORMATION ON ADDITIONAL ACTIVITIES AND DESTINATIONS TO EXTEND YOUR TRIP TO THE ATLANTIC FOREST, CHAPADA DOS GUIMARAES , PARNAIBA HEAD WATERS NATIONAL PARK AND OTHER DESTINATIONS



NEOTROPICAL

NATURE & BIRDING TRIPS

MANED WOLF GUARANTEED OPTION 2

DAY 1 (July 13th) Arrival to Belo Horizonte

This trips can be arrange prior to the Pantanal trip.

Arrive in Belo Horizonte, Brazil, at Internacional Airport Tancredo Neves (CNF). No activities are planned for this day so you can rest from your travels. Transfer to your hotel located few minutes away. We can organize an early check-in as an option for those that need it. Usually rooms become available by 2 pm; getting into a room earlier than that requires additional charges (Not included in the rate).

This evening you'll enjoy a welcome dinner and the chance to meet your guide and travel companions, and learn more about our coming adventure.

Accommodations in Linx Confins Hotel (-/-/D)



PARNAIBA NATIONAL PARK - WOLF CAMPS

DAY 2 (July 14th) Flight to Barreiras (BRA) - Parnaíba Headwaters National Park

Nestled just a four-hour drive away from Brazil's Barreiras ("BRA") airport, lies a treasure trove of biodiversity – the most wildlife-rich tropical dry forest in the New World. Within this unique landscape, we invite you to the "Wolf Camps," offering an unparalleled opportunity for up-close encounters with some of nature's most remarkable inhabitants. Parnaíba Headwaters National Park, Northeastern Brazil. The Wolf Camp reserve spreads through 19,000 acres and adjacent to the 1.8-million-acre Parnaíba Headwaters National Park.

The heart of our experience lies in granting you the world's exclusive chance to observe Maned Wolves, an endangered predator that stands tall as the most elegant wild canid on the planet. Amidst their natural habitat, we provide a guarantee of intimate sightings, a unique promise that sets our offering apart.

Embarking on this journey, you'll encounter not just the majestic Maned Wolves, but also indulge in two other exceptional phenomena available only at the Wolf Camps. Witness the breathtaking spectacle of a flock of 12-25 Hyacinth Macaws foraging mere meters away, a sight that encapsulates their vibrant beauty. Equally extraordinary, observe a troop of 10-15 Bearded Capuchins employing their ingenious technique of using specialized hammer rocks to crack open rock-hard palm nuts on sandstone anvil rocks.

This adventure promises to unveil the secrets of an ecosystem brimming with life, where nature's wonders unfold before your eyes, leaving you with indelible memories of encounters found nowhere else on Earth.

Accommodations at Wolf Camps (B/L/D)



PARNAIBA HEADWATERS NATIONAL PARK

Day 3-4-5 (July 15th-16th-17th) Wolf Camps

The following days you'll stay at the two Wolf Camps, each of which has only seven spacious double-occupancy, private bungalows, offer the finest viewing of the rare and beautiful wildlife of the world's largest remaining tropical dry forest, namely the millions of acres of intact forests at the junction of four states of northeastern Brazil: Piauí, Bahia, Tocantins, and Maranhão

The Parnaíba Headwaters National Park (PHNP), was created to protect vast tracts of dry, scenic woodland savannas north of Brasília, the capital of Brazil. The sunny valleys and 1,000-foot-tall, red sandstone cliffs of this reserve offer unique, charismatic wildlife attractions not found together in any other park in South America.

The reserve offers the only site in the world where Maned Wolves can be seen on a guaranteed basis in their natural habitat. The Wolf Camps also feature other unique wildlife spectacles, notably large flocks of Hyacinth Macaws up close in perfect light, and the world-famous —the hammer-rock-wielding Bearded Capuchin Monkeys, which were discovered in 2002 and appear regularly on international wildlife documentaries from BBC and National Geographic. This is simply the ideal place for a nature South America trip.

A former Hyacinth Macaw trapper had learned so much about wildlife behavior during his decades of capturing wildlife later he switched activities to conservation and he was able to employ all of his special secrets to make it possible for our guests to marvel at close-up views of the most captivating wildlife of the dry forest: Maned Wolves, Hyacinth Macaws, Bearded Capuchins, King Vultures, Blue-and-Yellow and Red-and-Green Macaws, Helmeted Manakins, Red-legged Seriemas, Tufted-eared Marmosets, and Black-and-Gold Howler Monkeys.

Accommodations at Wolf Camps (B/L/D)



PARNAIBA HEADWATERS NATIONAL PARK

Day 6 (July 18th) Transfer to Barreiras - Flight Belo Horizonte

Today we pay one early morning visit to the flock of Hyacinth Macaws and we leave the Wolf Valley Camp around 8 am and make our way back to Barreiras to catch our flight back to Belo Horizonte. We'll arrive to Belo Horizonte in time for evening departures of several airlines. If you require an overnight stay to start fresh the following day we can arrange an additional night at the hotel we regularly use close to the airport. If you want to take the extension trip to the Atlantic Forest and add new chapters to your adventure in this mesmerizing country, let us know.

(B/L/-)



TRIP CONSIDERATIONS

CLIMATE: This tour takes place during the dry season. The Cerrado is typically hot and semi-humid with rainy summers and dry winters. May through August is the best time for wildlife viewing.

Temperature ranges between 80.6F (27C) – 46.4F (8C)

Rainfall: 3.1 inches (78.3mm) – 1.2 inches (31.4) and it is usually very sunny.

OVERVIEW:

Max group size: 6 + Tour leader

Length: 6 days

Starting city: Belo Horizonte (CNF)

Ending city: Belo Horizonte (CNF)

Pace: Moderate

Physical difficulty: Moderate

Focus: Natural history, birding and photography

VISA: The Brazilian Government has cancelled the visa waiver program and will resume the issuance of visitor visas for citizens from Australia, Canada, and the United States of America. The measure will take effect on and after the 1st of October 2023. Until then, the exemption will remain valid, meaning that those entering before 30/09/2023 are still exempt from a Visit Visa, even if they leave after 01/10/2023. Visitors from the UK, EU, South Africa, New Zealand, and various other countries continue to be exempt from tourist visa requirements. Consult your closest consulate to verify the requirements that apply to your particular country.

PRICE PER PERSON \$4890 in double occupation room

INCLUDED:

- Private service bilingual guide
- Private transportation
- Accommodation in double or triple occupation. (Single room adds a fee)
- All meals listed in the itinerary with soft drink or purified water
- Transfers In-Out
- All excursions and activities listed in itinerary
- Entrance fees to all the reserves and activities
- All accommodations listed in the itinerary
- Internal flights:
Belo Horizonte (CNF) / Barreiras (BRA) / Belo Horizonte (CNF)

NOT INCLUDED:

- International airfare
- Alcoholic Beverages
- Additional drinks
- Tips
- Any other item not specified

CUSTOMIZED & EXTENSION TOURS

Are you looking for a travel experience that is completely customized to your preferences? Allow us to assist you in designing a custom trip that will take you to practically any location you desire. With a personalized tour, you'll have the freedom to travel with a group of your choice, all while setting your own schedule and pace. We may add extensions to other sites such as the Atlantic Forest, Chapada dos Guimaraes, and an exclusive trip to Emas National Park - a once-in-a-lifetime opportunity to see the revered Maned Wolf in its natural habitat. Your specific preferences will be prioritized.



NEOTROPICAL

NATURE & BIRDING TRIPS